





£285,000

Located on the sought-after Saints estate in Far Bletchley is this two double bedroom semi-detached house. The property boasts a generously sized, secluded rear garden, off-road parking, a kitchen/diner and two double bedrooms. Further benefits include being located within walking distance of a range of local schools and shops.

Property Description

ENTRANCE

UPVC door to:

ENTRANCE HALL

Double glazed window to side aspect. Radiator, door to lounge.

LOUNGE

Double glazed window to front aspect. Two radiators, open to kitchen, multi-fuel fireplace.

KITCHEN

Double glazed windows to rear and side aspects, double glazed door to garden. Fitted with a range of base and eye level units with rolled edge work surface over, space for washing machine, space for fridge freezer, integrated: dishwasher, electric hob with extractor fan over, electric oven; part tiled walls, radiator, door to storage cupboard.

LANDING

Double glazed window to side aspect. Doors to bedrooms and shower room, airing cupboard.

BEDROOM ONE

Two double glazed windows to front aspect. Radiator, two built-in cupboards.

BEDROOM TWO

Double glazed window to rear aspect. Radiator.

SHOWER ROOM

Double glazed frosted window to rear aspect. Low level WC, wash hand basin in vanity unit, shower cubicle, tiled floor and walls, heated towel rail.

OUTSIDE

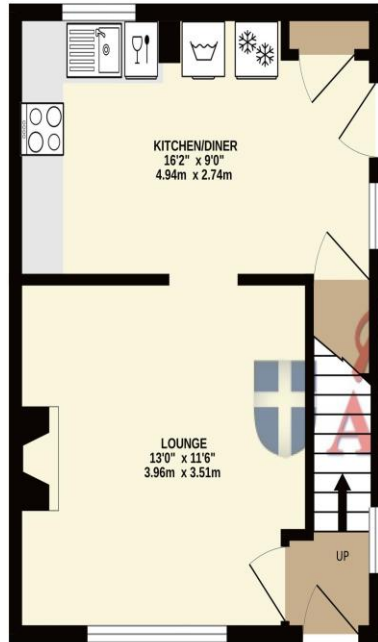
FRONT GARDEN

Mainly laid to lawn with flower beds, off-road parking for one vehicle, brick wall to side.

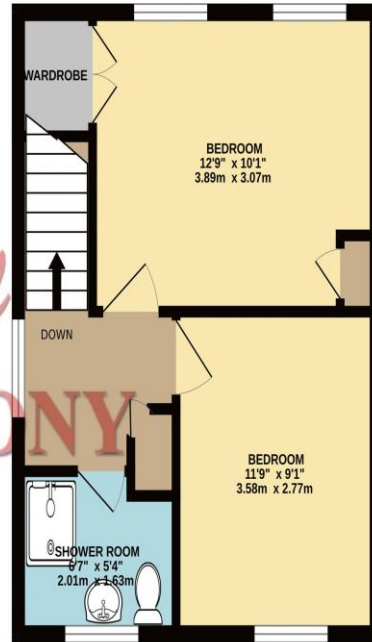
REAR GARDEN

Paved patio area, lawn area, flower beds, mature trees, side gated access, summerhouse and shed to remain, outside tap, electric awning to remain, enclosed by wooden fence panelling.

GROUND FLOOR
331 sq.ft. (30.8 sq.m.) approx.

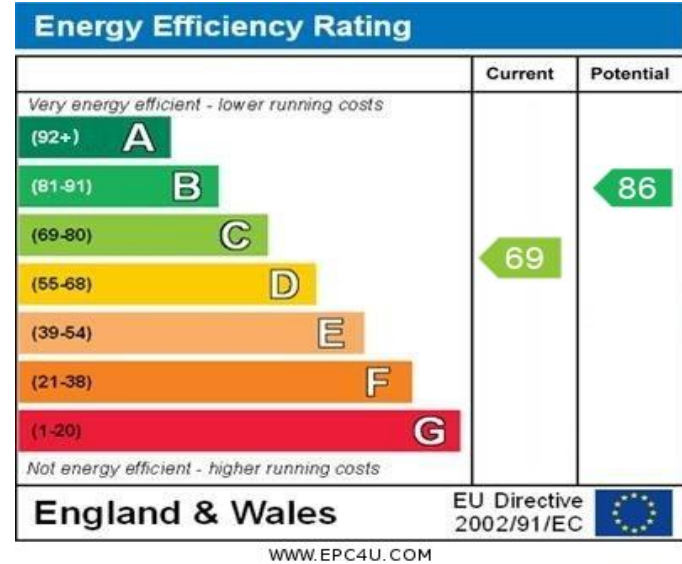


1ST FLOOR
336 sq.ft. (31.2 sq.m.) approx.



TOTAL FLOOR AREA: 667 sq.ft. (62.0 sq.m.) approx.

Whilst every attempt has been made to ensure the accuracy of the floorplan contained here, measurements of doors, windows, rooms and any other items are approximate and no responsibility is taken for any error, omission or mis-statement. This plan is for illustrative purposes only and should be used as such by any prospective purchaser. The services, systems and appliances shown have not been tested and no guarantee as to their operability or efficiency can be given.
Made with Metropix ©2024



MONEY LAUNDERING REGULATIONS 2017 intending purchasers will be asked to produce identification and proof of financial status when an offer is received. We would ask for your co-operation in order that there will be no delay in agreeing the sale.

THE CONSUMER PROTECTION REGULATIONS 2008 The Agent has not tested any apparatus, equipment, fixtures and fittings or services and so cannot verify that they are in working order or fit for the purpose. A Buyer is advised to obtain verification from their Solicitor or Surveyor. References to the Tenure of a Property are based on information supplied by the Seller. The Agent has not had sight of the title documents. A Buyer is advised to obtain verification from their Solicitor. You are advised to check the availability of this property before travelling any distance to view. We have taken every precaution to ensure that these details are accurate and not misleading. If there is any point which is of particular importance to you, please contact us and we will provide any information you require. This is advisable, particularly if you intend to travel some distance to view the property. The mention of any appliances and services within these details does not imply that they are in full and efficient working order. These particulars are in draft form awaiting Vendors confirmation of their accuracy. These details must therefore be taken as a guide only and approved details should be requested from the agents

190 Queensway Bletchley Milton Keynes MK2 2ST
01908 648 666 | bletchley@maea.co.uk